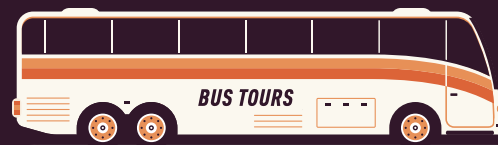


LEARN BEFORE YOU BOARD

BUS SAFETY TIPS FOR PASSENGERS ON THE ROAD



Get Familiar With Safety Equipment

A fire extinguisher is usually stored in the front of the bus. It may be behind the driver's seat, underneath a passenger seat on the right side, or in an overhead compartment. If you can't locate the fire extinguisher, ask the driver where it is kept.

An emergency button or switch in the bathroom lets you contact the driver if you need help. Use hand supports in the restroom when the vehicle is moving.

Stay Safe on Board

When entering and exiting the vehicle, use the handrails and watch your step. Ask the driver to assist you if needed.

If a step stool or platform has been placed outside the bus, step on the center of the stool or platform to keep your balance.

If your bus has passenger seat belts, keep yours fastened while the bus is operating.

Stay seated while the bus is in motion, and keep your hands and feet out of the aisles.

Keep personal belongings in the overhead bin or securely under your seat so they don't slide into or block the aisles.

If you need to stand up or walk while the bus is moving, use the seat backs or overhead supports to help keep your balance. Do not move past the clearly marked line at the front of the bus while it is moving.

In an Emergency

Listen to and follow the bus driver's instructions. If you are able, help passengers with disabilities or others who need assistance to exit. If you believe your safety or the safety of others is in immediate danger, call 911.

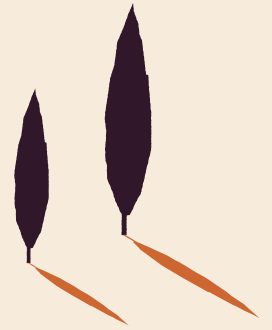


LEARN BEFORE YOU BOARD

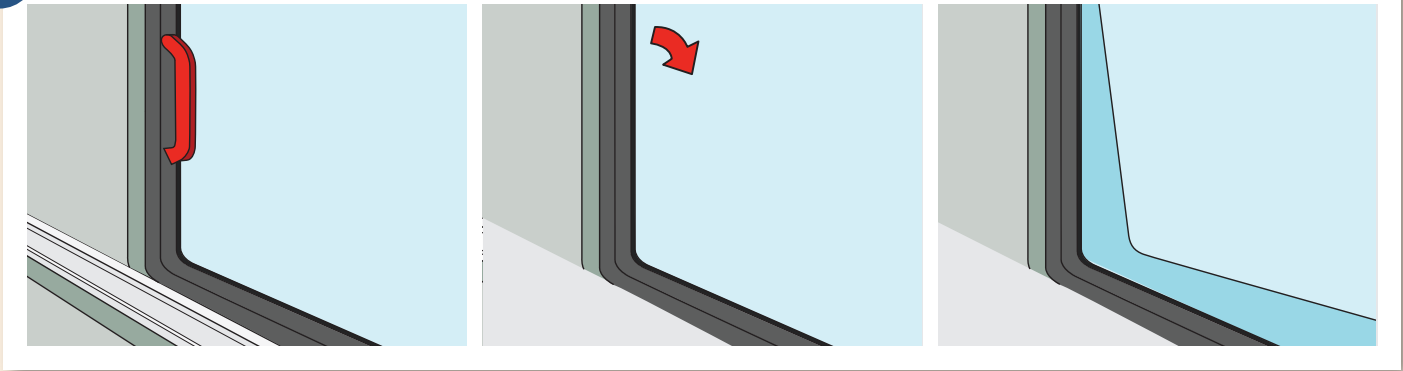
Using Emergency Exits

Look for the emergency exits – in addition to the boarding door, there should be several window exits, and a rooftop exit or hatch. If you are seated beside a window emergency exit, and don't think you can operate it, move to another seat.

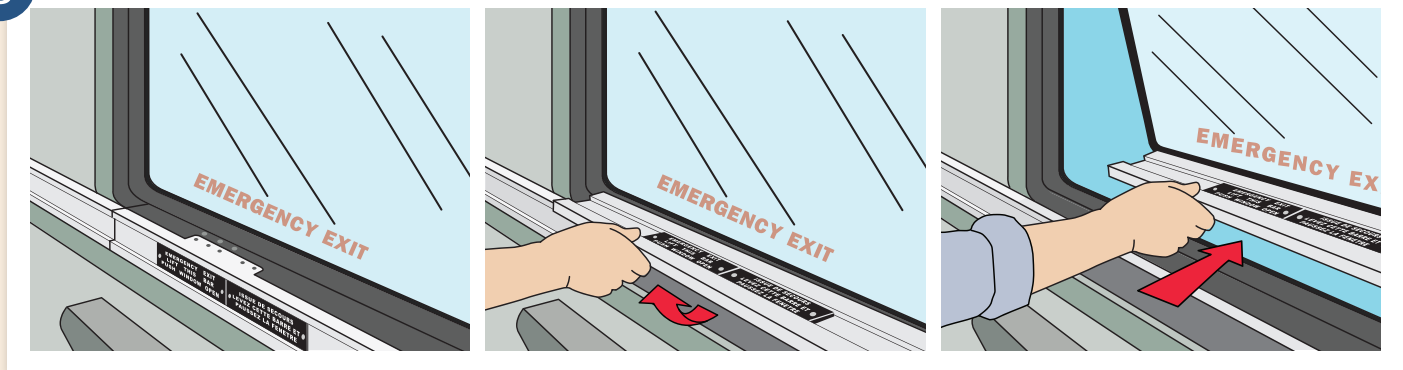
Windows are marked as emergency exits, with instructions to release the pull (A) or push (B) lock. They push out to open. Follow the marked instructions to open the roof hatch (C).



A



B



C

