



Personal Safety



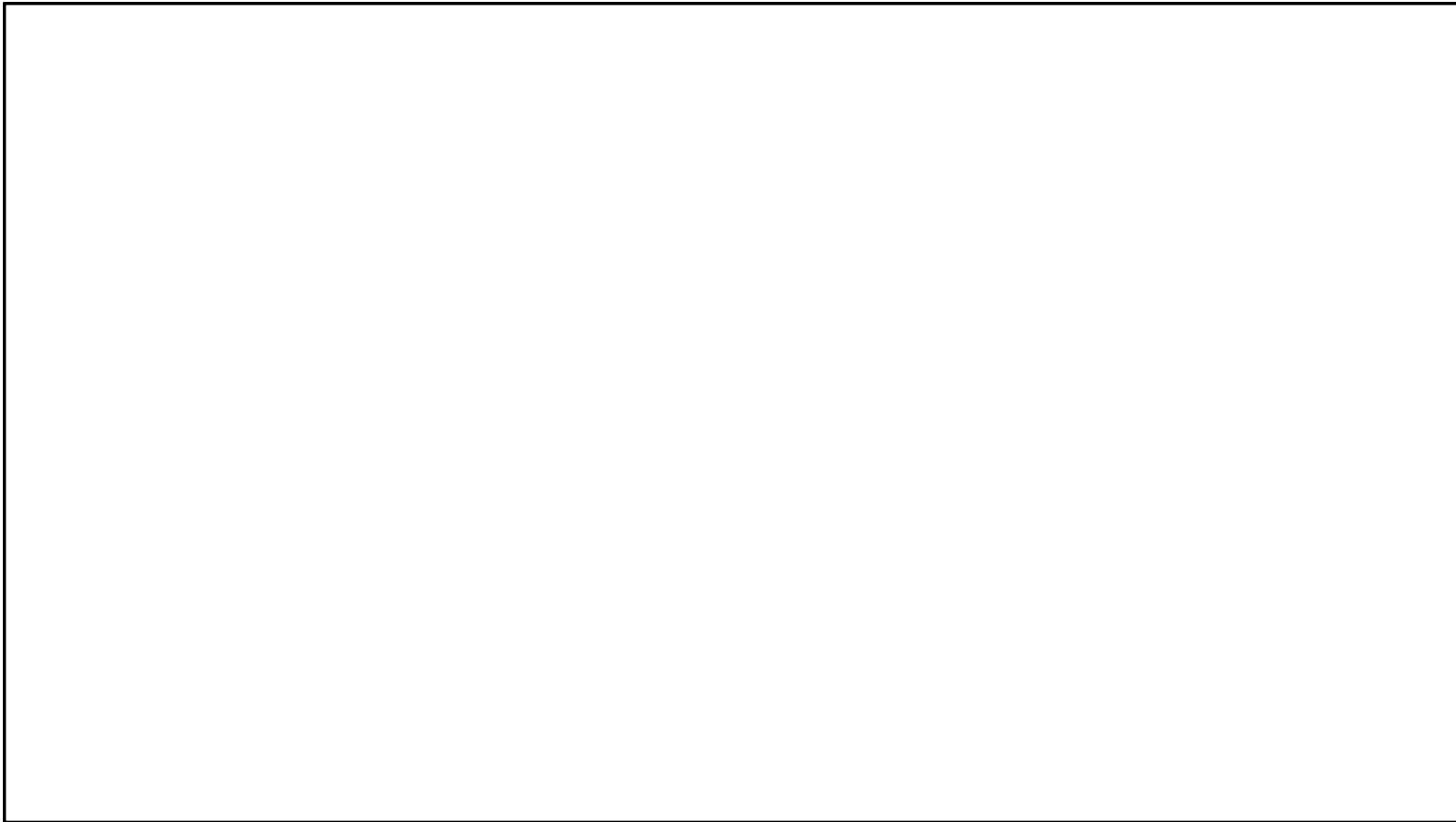
When Conducting a Large Truck or Bus Vehicle Stop



OBSERVE	Identify traffic violations associated with large truck and bus crashes.
CONSIDER	Identify safety considerations that apply before, during, and after a vehicle stop.
DETECT	Identify potential indicators of serious vehicle defects or criminal activity.
REVIEW	Identify the documentation required for processing a large truck or bus vehicle stop.
REPORT	Identify the appropriate boxes to check when filling out a citation for a large truck or bus vehicle.



Video: Approaching the Vehicle



For Official Use Only



Maintain Awareness



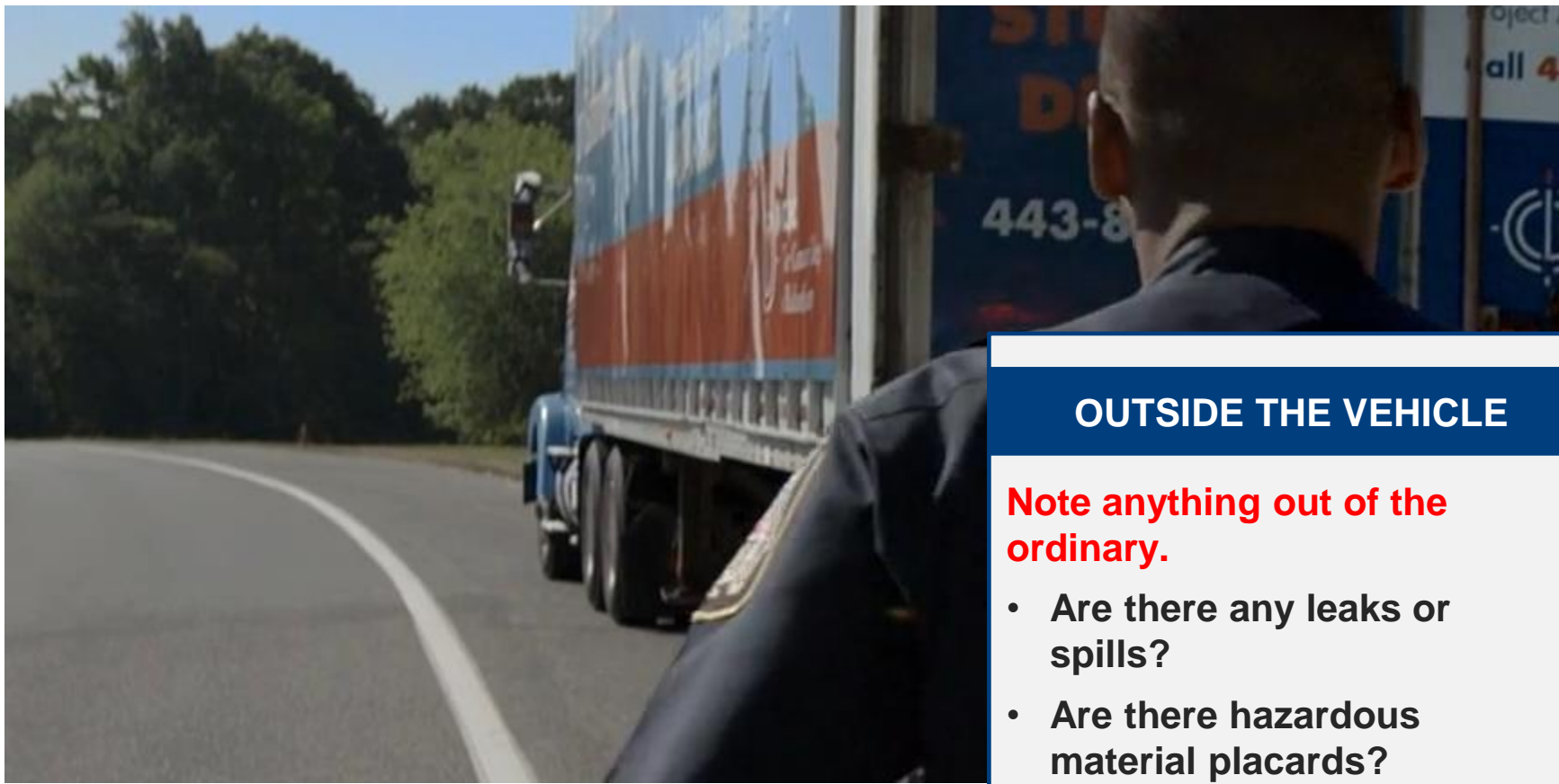
INSIDE THE VEHICLE

Use the vehicle's mirrors to monitor the operator.

- What is the operator doing?
- Are there any passengers?
- Are there any animals?



Maintain Awareness



OUTSIDE THE VEHICLE

Note anything out of the ordinary.

- Are there any leaks or spills?
- Are there hazardous material placards?



Video: Safety Around the Truck Cab



For Official Use Only



Visor Cards



When making a stop of a large truck or bus, your primary concerns should be:

- **Can the driver of the vehicle see your lights and hear your sirens?**
- **Is there anything about the roadside environment that would deter the driver from pulling over?**

To minimize these concerns, be sure to position your patrol car so that the driver can see you in the side mirrors. Also make sure that the shoulder of the road will support the weight of the vehicle and that there is adequate distance for stopping and for getting up to speed when reentering traffic.

Do not stop on curves, hills, or steep grades.

MAKING THE STOP

Federal Motor Carrier Safety Administration LARGE TRUCK AND BUS TRAFFIC ENFORCEMENT

If you approach the vehicle on the driver side, be sure to stay aware of traffic. Approaching the vehicle on the passenger side provides a safer option.

In either case, use the vehicle's mirrors to maintain awareness of what the driver is doing inside the vehicle.

Use extra caution around doors, or if you climb on the vehicle.



STAY ALERT

Federal Motor Carrier Safety Administration LARGE TRUCK AND BUS TRAFFIC ENFORCEMENT