

Work zones present unique challenges for commercial motor vehicles (CMV), which include large trucks and buses. Do your part to make roads safer by remembering to plan your route, move early into an open lane, avoid distractions, obey signs and signals to slow down or stop, and keep extra space between vehicles.

# DRIVING SAFELY THROUGH WV WORK ZONES

## NATIONAL WORK ZONE FACTS 2021

Total Work Zone Fatalities: 956



Drivers and Passengers: 778

Pedestrians and Bicyclists: 173

Others: 5

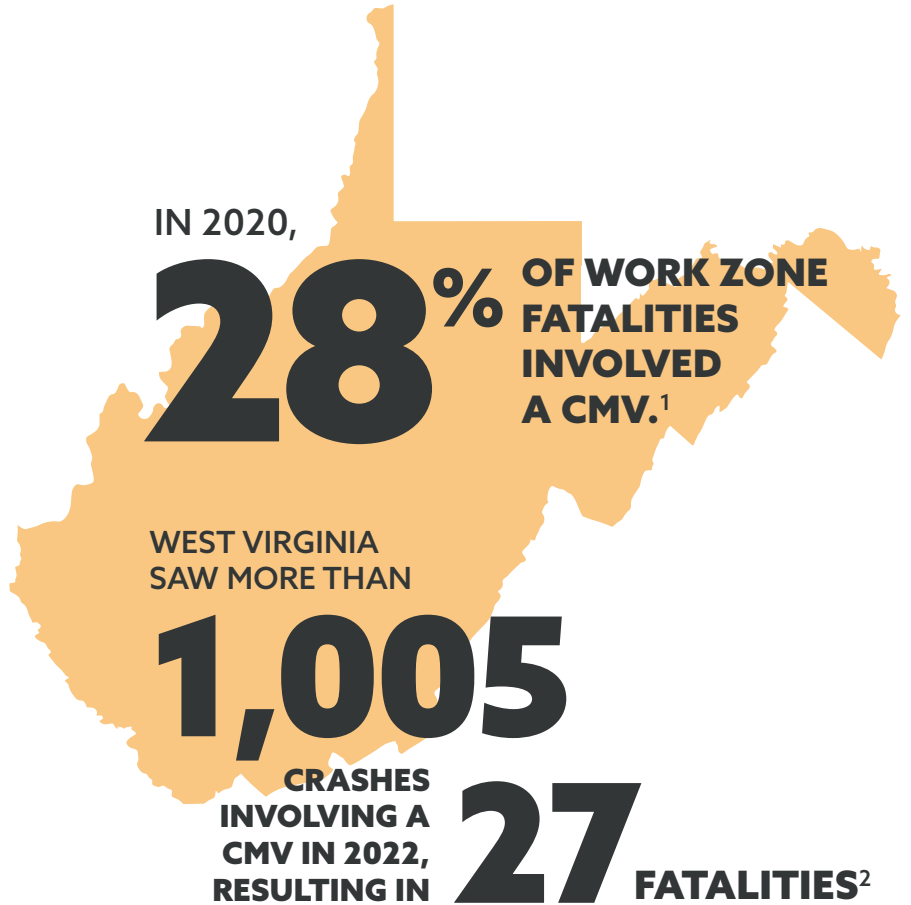
*(Occupants of non-motor vehicle transport device and persons on personal conveyances)*

Total Fatal Work Zone Crashes Involving a CMV:

# 291



From 2020 to 2021, the number of fatal work zone crashes involving a large truck or bus increased by **39%**.



## STAY ALERT WEST VIRGINIA:

Download the WV511 app or visit <https://wv511.org> for the most up-to-date work zone information and real-time travel information.

<sup>1</sup> National Work Zone Safety Information Clearinghouse

<sup>2</sup> Truckinfo.net

For more information on driving safely around large trucks and buses, visit [www.ShareTheRoadSafely.gov](http://www.ShareTheRoadSafely.gov) and for more on work zone safety, visit [www.workzonesafety.org](http://www.workzonesafety.org).

**OUR ROADS™ SAFETY**  
Partnership for **Responsible Driving**



  
U.S. Department of Transportation  
Federal Motor Carrier Safety Administration