

Truck Parking Crashes

Jessica Powell



U.S. Department of Transportation
Federal Motor Carrier Safety Administration

Federal Motor Carrier Safety Administration

2023

ANALYSIS,
RESEARCH, &
TECHNOLOGY
FORUM

VIRTUAL EVENT



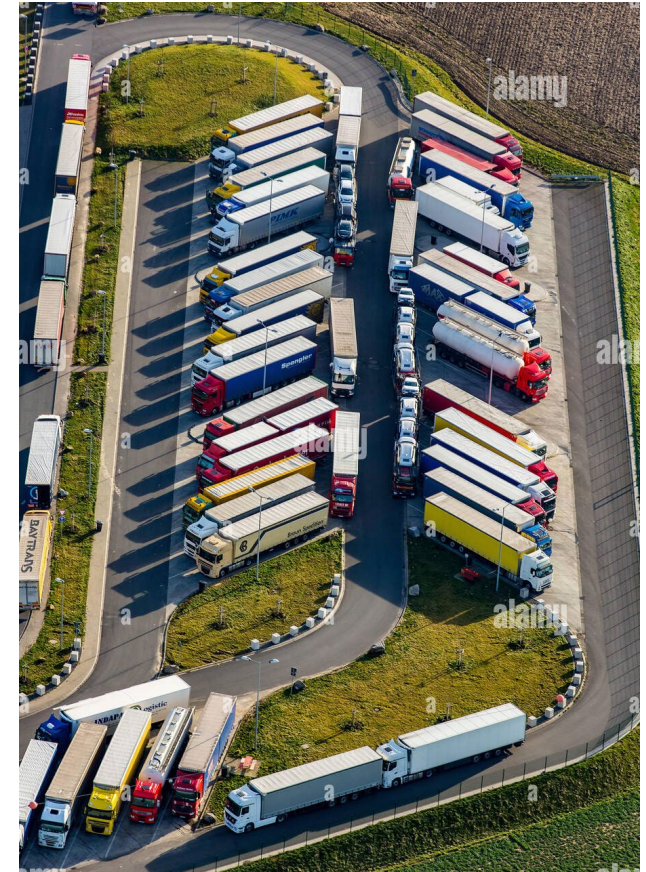
Background / Purpose

- Is lack of access to parking contributing to fatal crashes?

**Senate, House introduce
bipartisan truck parking bill**
Landline.media | March 2023

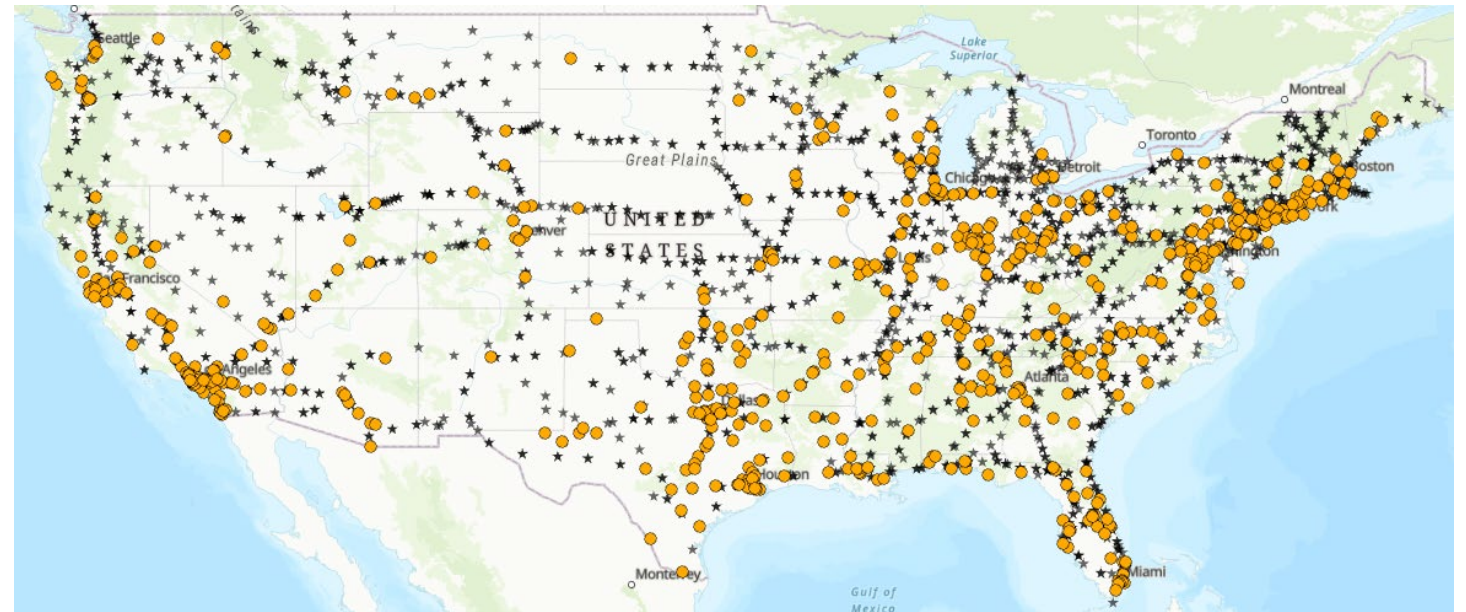
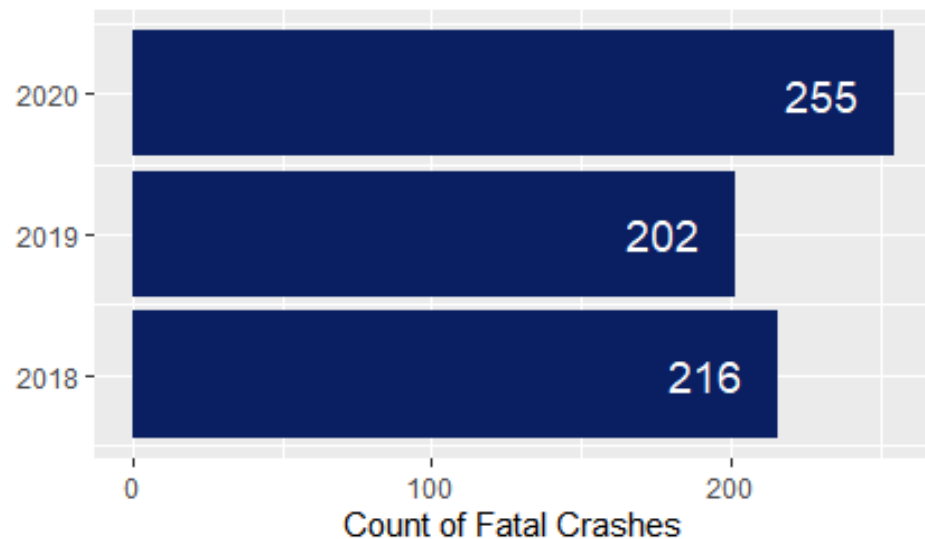
**Shortage of Florida truck
parking leaves drivers
parking on off-ramps**
Fox35Orlando.com | March 2023

**Top 3 Truck Drivers'
Concerns 2023: Parking,
Restrooms, And Speed**
TankTranpsort.com | March 2023



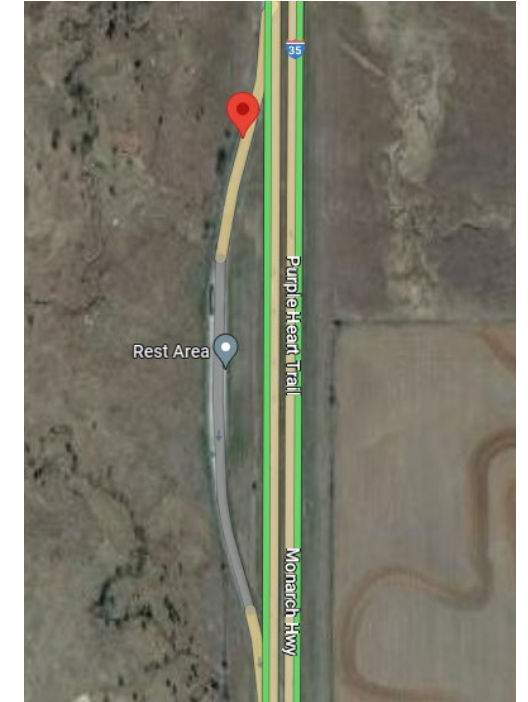
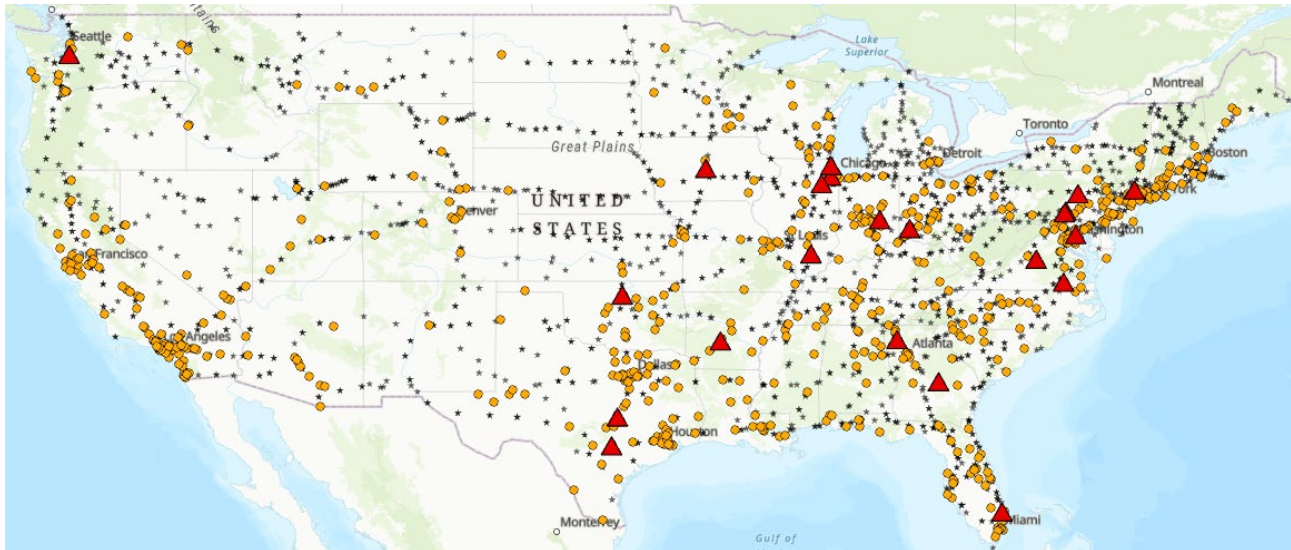
Data

- Fatality Analysis Reporting System (FARS)
 - Parkwork data file - fatal crashes involving parked/working vehicles (2018-2020)
 - 673 fatal crashes
- FHWA Jason's Law Truck Parking Locations (2019)
 - 1,195 truck parking locations



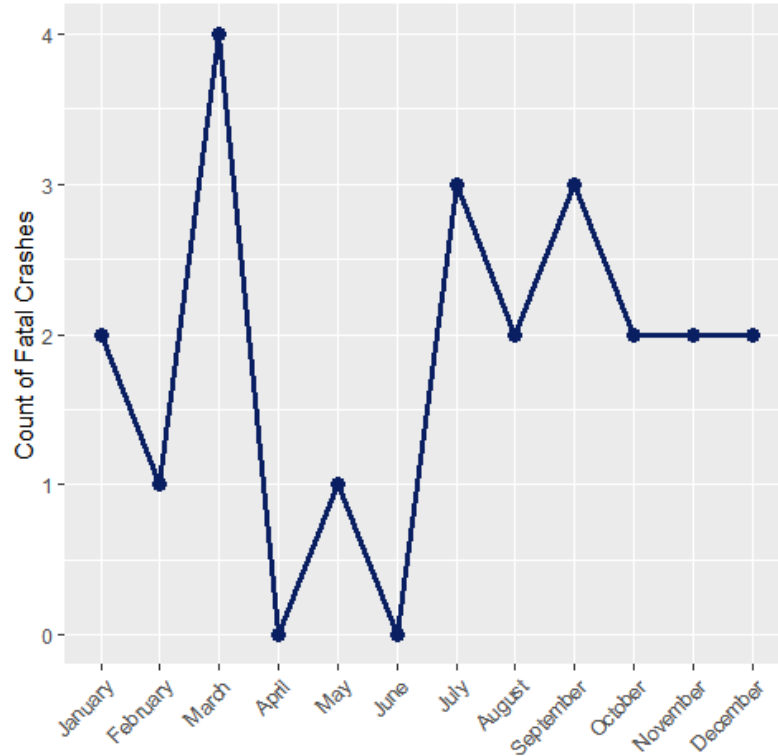
Methodology

- Identify crashes near truck parking
 - Focused on crashes within 1 mile of a truck parking location
 - Used Google maps satellite view
- Small subset of fatal crashes related to truck parking locations (3.3% = 22 crashes)



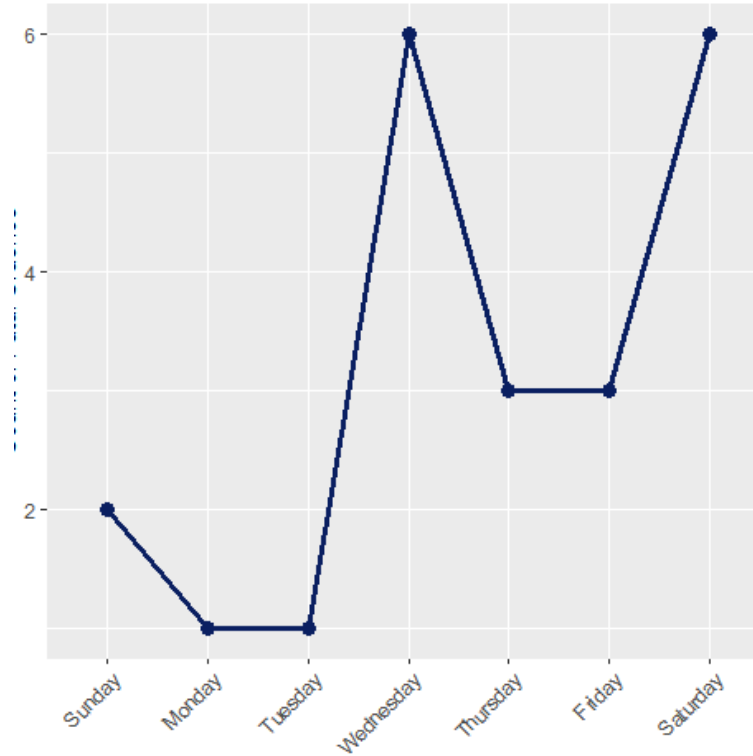
Analysis

Month



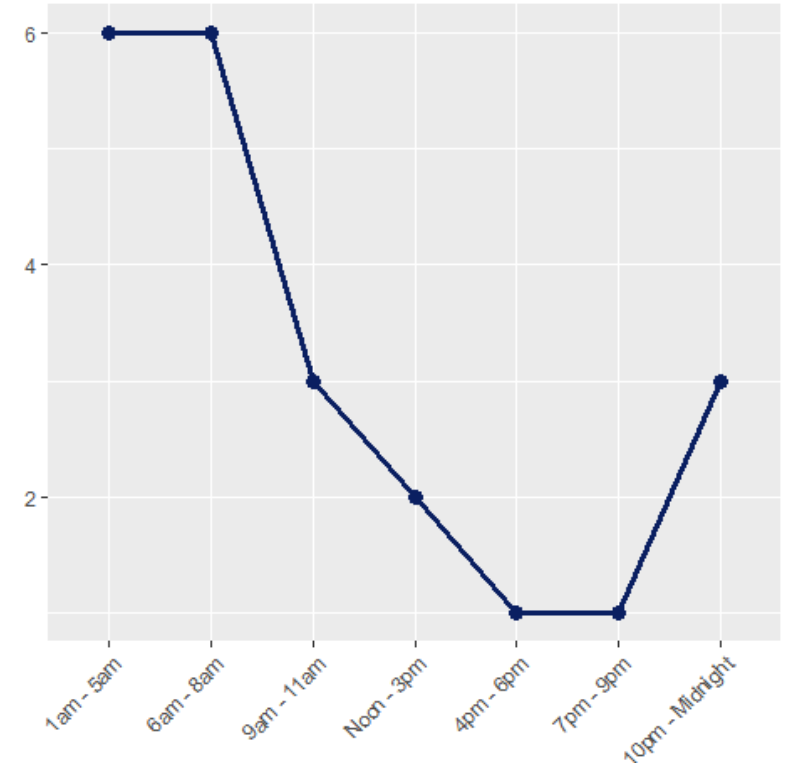
- March had the most fatal crashes of parked large trucks (18%)

Day of Week



- Most crashes occurred on a Wednesday or Saturday (55%)

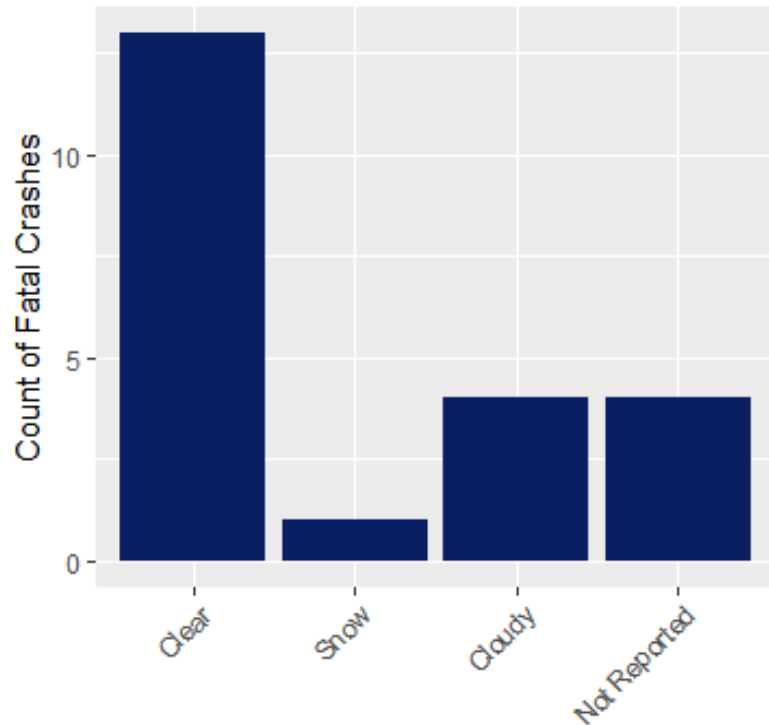
Time of Day



- The early morning between the hours of 1:00am and 8:00am had the most crashes (55%)

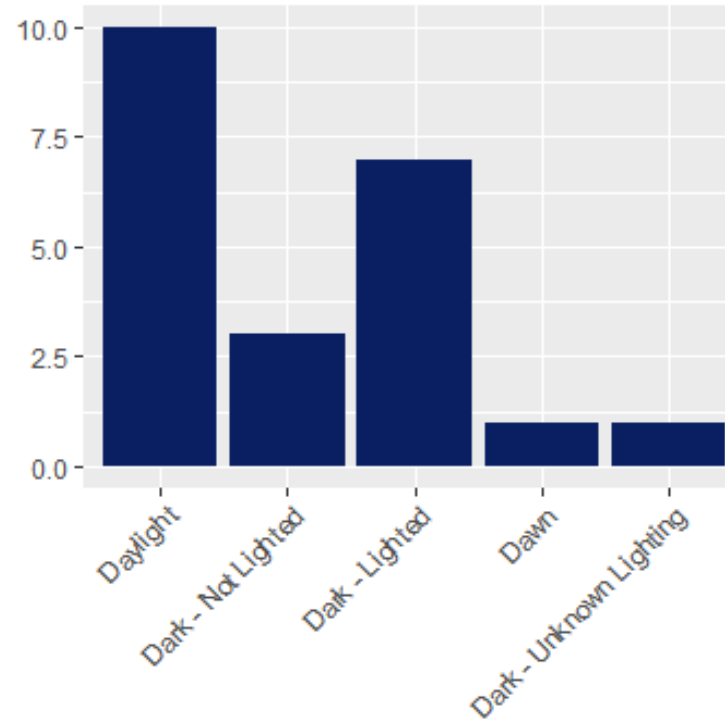
Analysis

Weather Condition



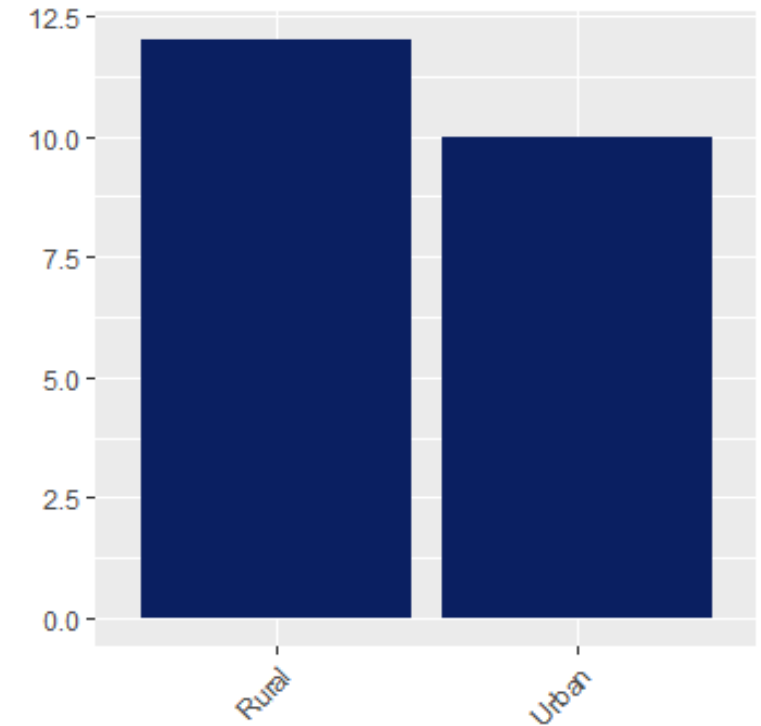
- Most fatal crashes of large parked trucks occurred in clear weather conditions (59%)

Light Condition



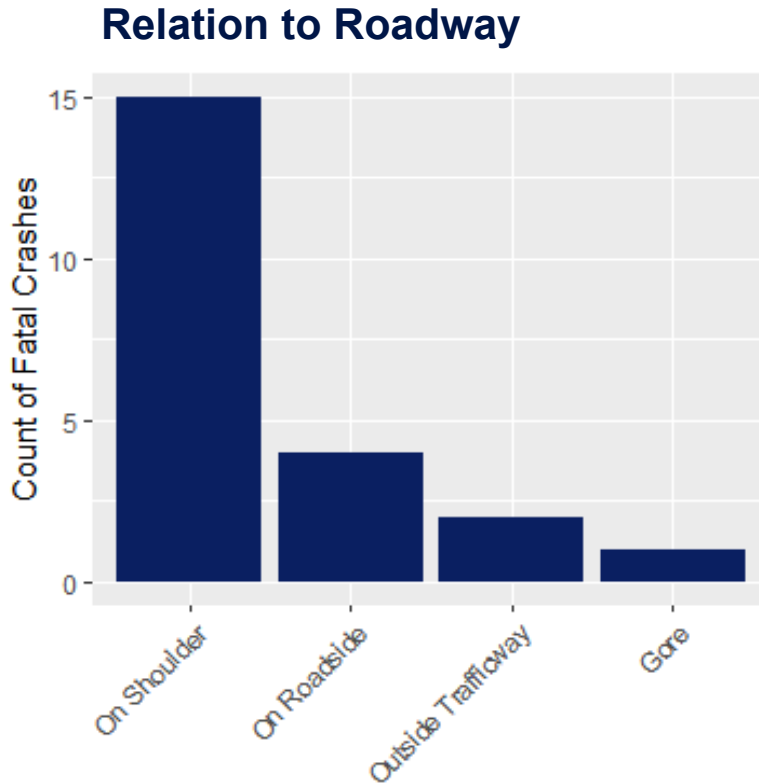
- Most crashes occurred in daylight (45%) or at night with lights (32%)

Rural / Urban

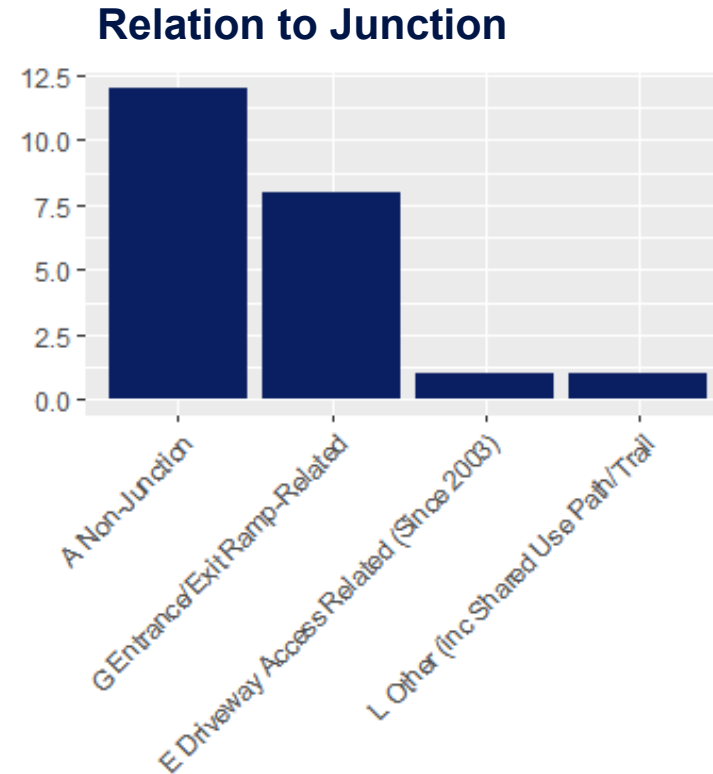


- Crashes were split evenly between rural and urban areas

Analysis



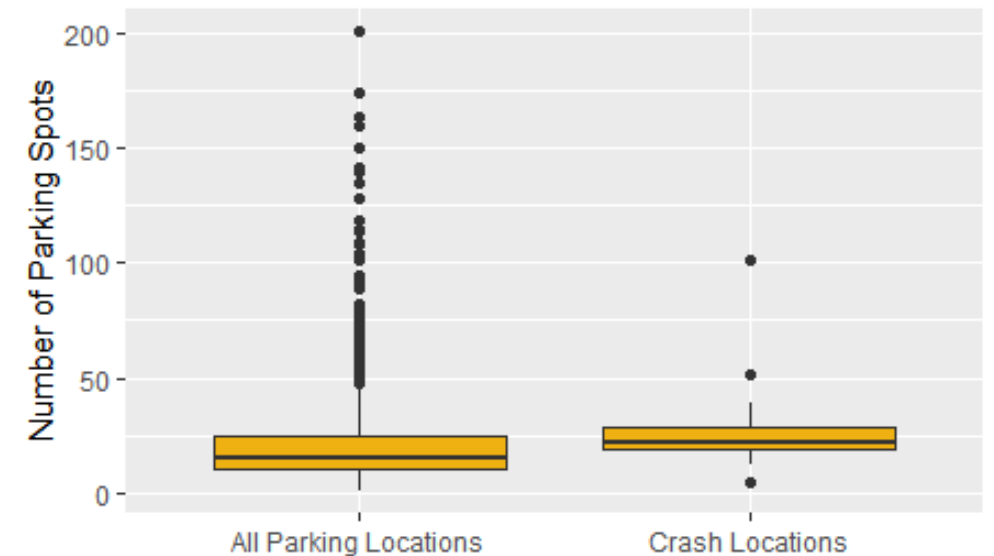
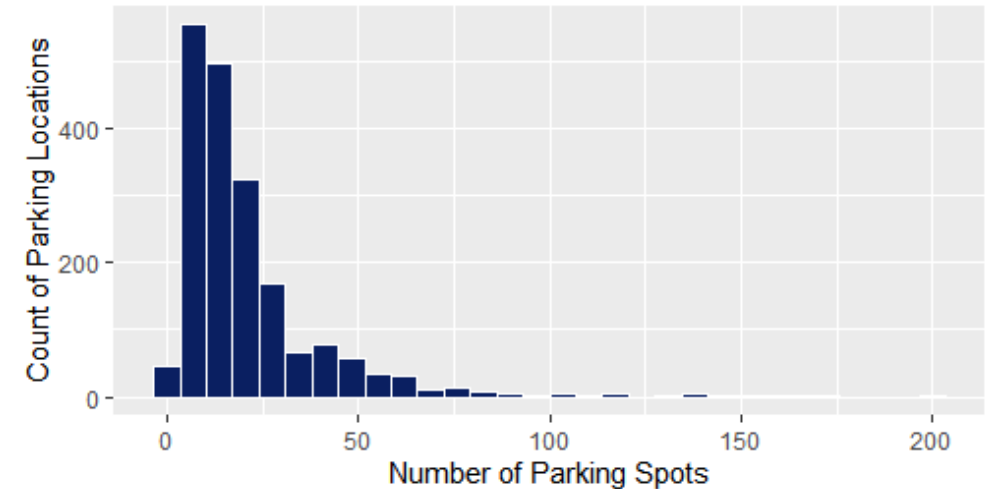
- Most crashes occurred on the shoulder (68%)



- Most crashes occurred at a non-junction location (55%) or were entrance/exit ramp related (36%)

Next Steps & Outcomes

- **Next Steps**
 - Repeat analysis using NHTSA crash data
 - Non-fatal crashes
 - Maryland, Virginia, Texas
 - Incorporate size of truck parking location
- **Outcomes**
 - Is lack of access to parking contributing to crashes of large parked trucks?



Contact Information

Jessica Powell

Statistician, Analysis Division

Jessica.Powell@dot.gov