

# New Entrant Analysis

Dan Burrill



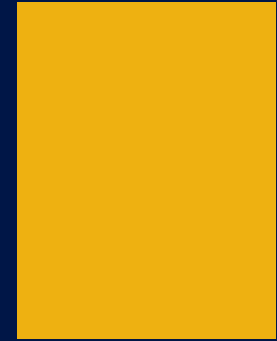
U.S. Department of Transportation  
Federal Motor Carrier Safety Administration

Federal Motor Carrier Safety Administration

# 2023

ANALYSIS,  
RESEARCH, &  
TECHNOLOGY  
FORUM

VIRTUAL EVENT

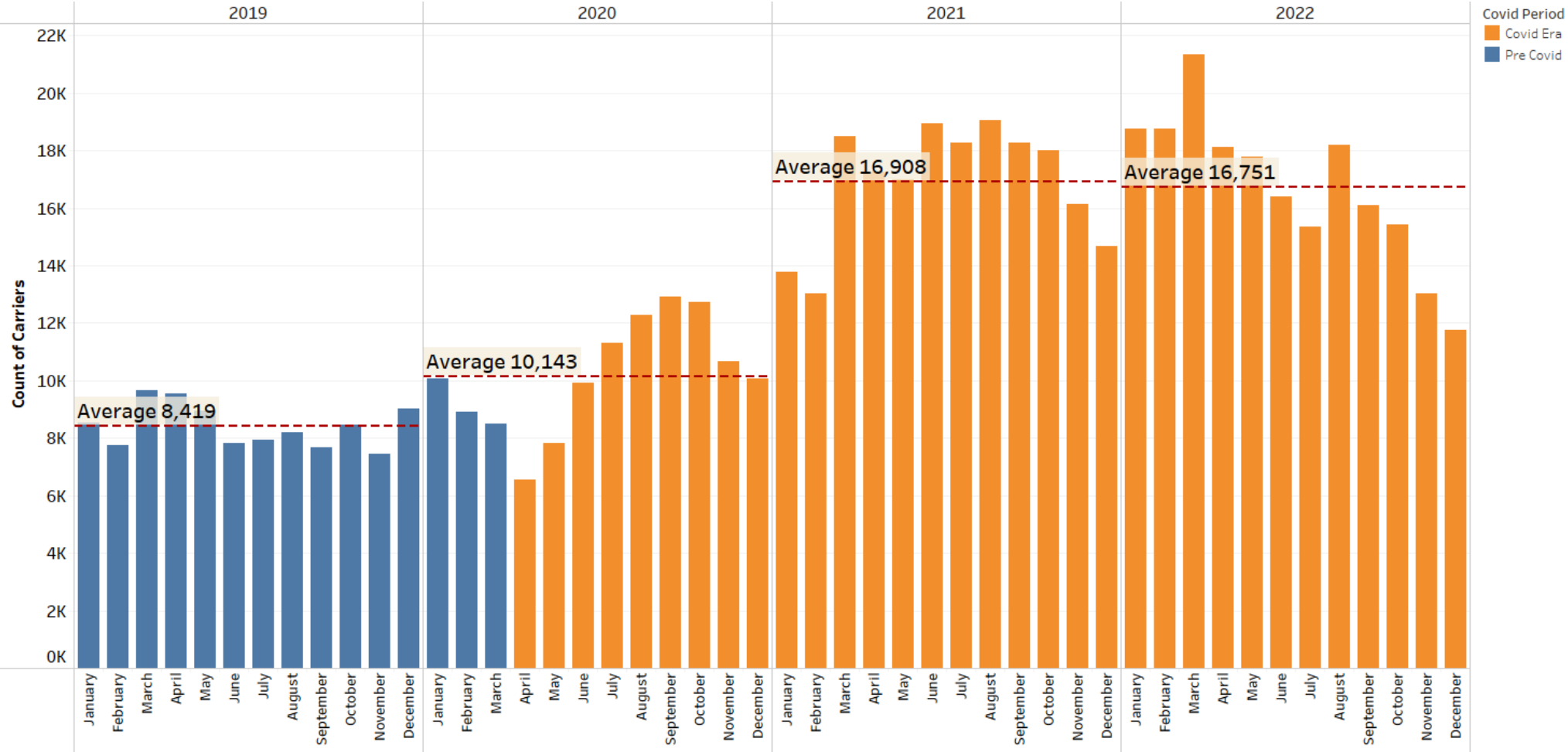


# Trends In New Carrier Registration

---

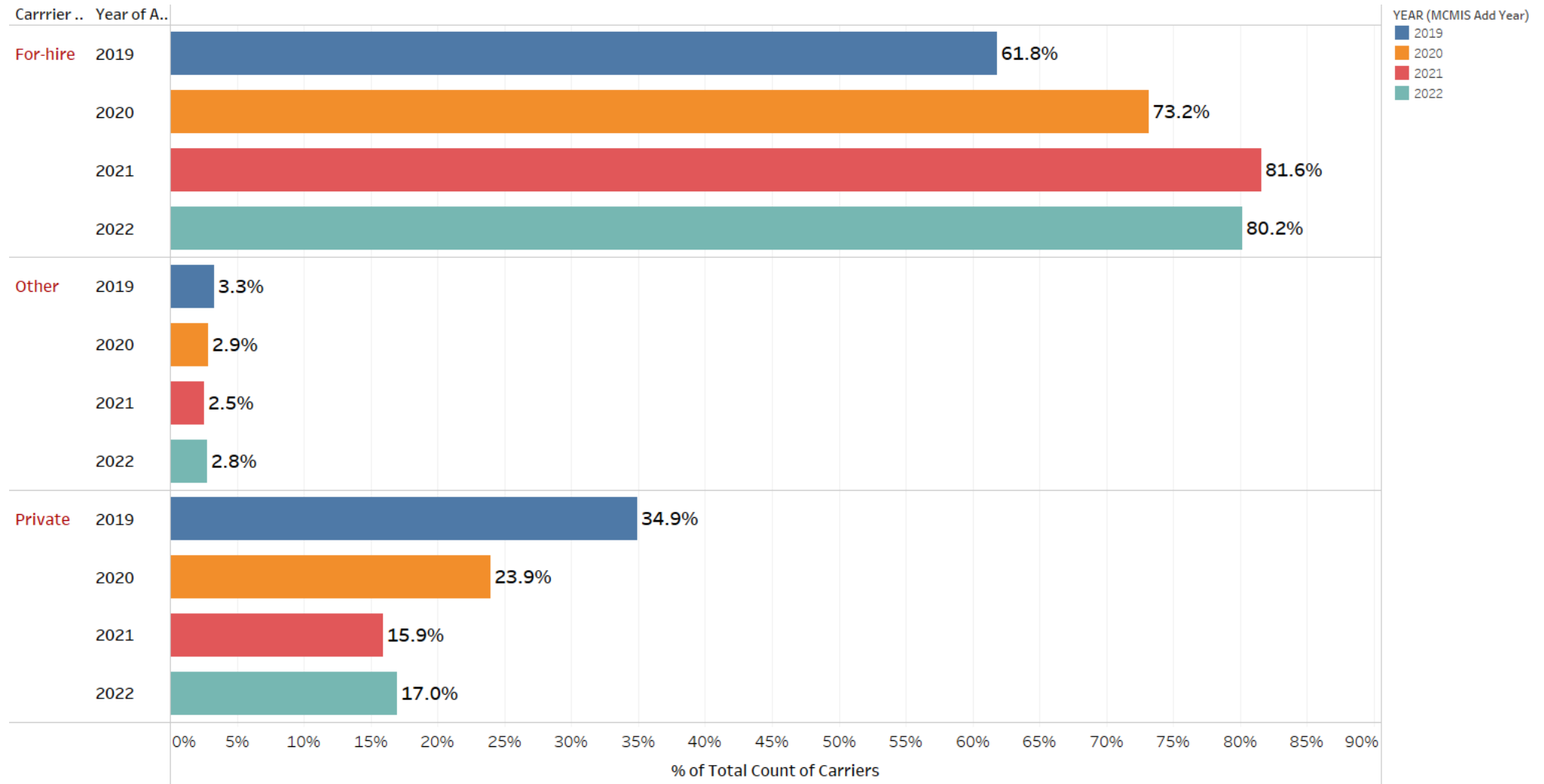
- **Overview of trends in new carrier registration**
  - Operation classification
  - Carrier size
  - Summary crash statistics
- **Anticipated Outcomes**
  - Complete an in-depth analysis of the characteristics and safety performance of new carriers joining the industry
- **Data Source**
  - Analysis of carrier registration and safety data from the Motor Carrier Management Information System (MCMIS)

# New Active Carriers Added to MCMIS Between (2019 – 2022)



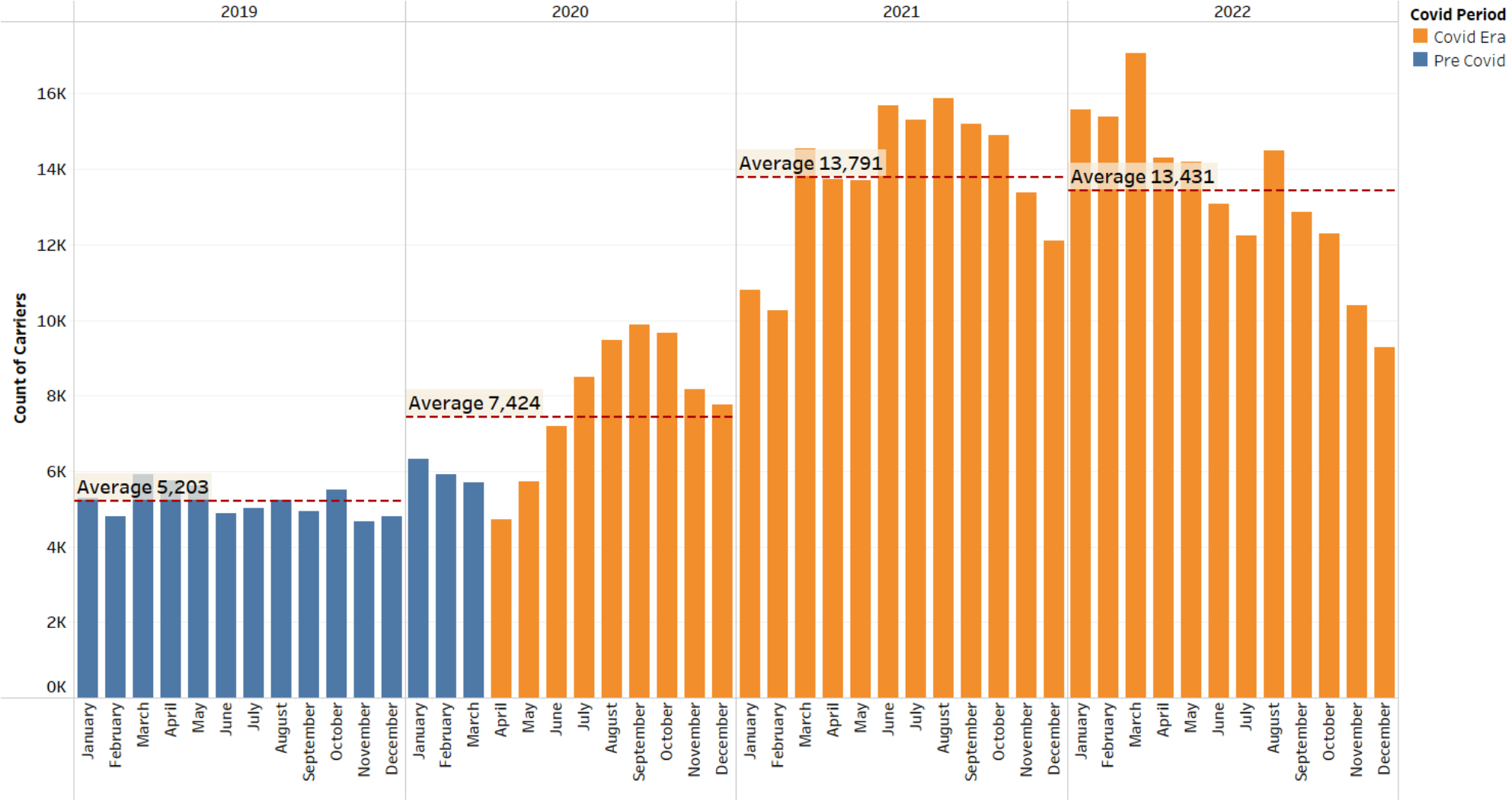
Data Source: Motor Carrier Management System (MCMIS) 02/24/2023 Data Snapshot

# Percent of New (Active) Carriers Added to MCMIS by Carrier Operation Class (2019 – 2022)



Data Source: Motor Carrier Management System (MCMIS) 02/24/2023 Data Snapshot

# New Active For-hire Carriers Added to MCMIS (2019 – 2022)



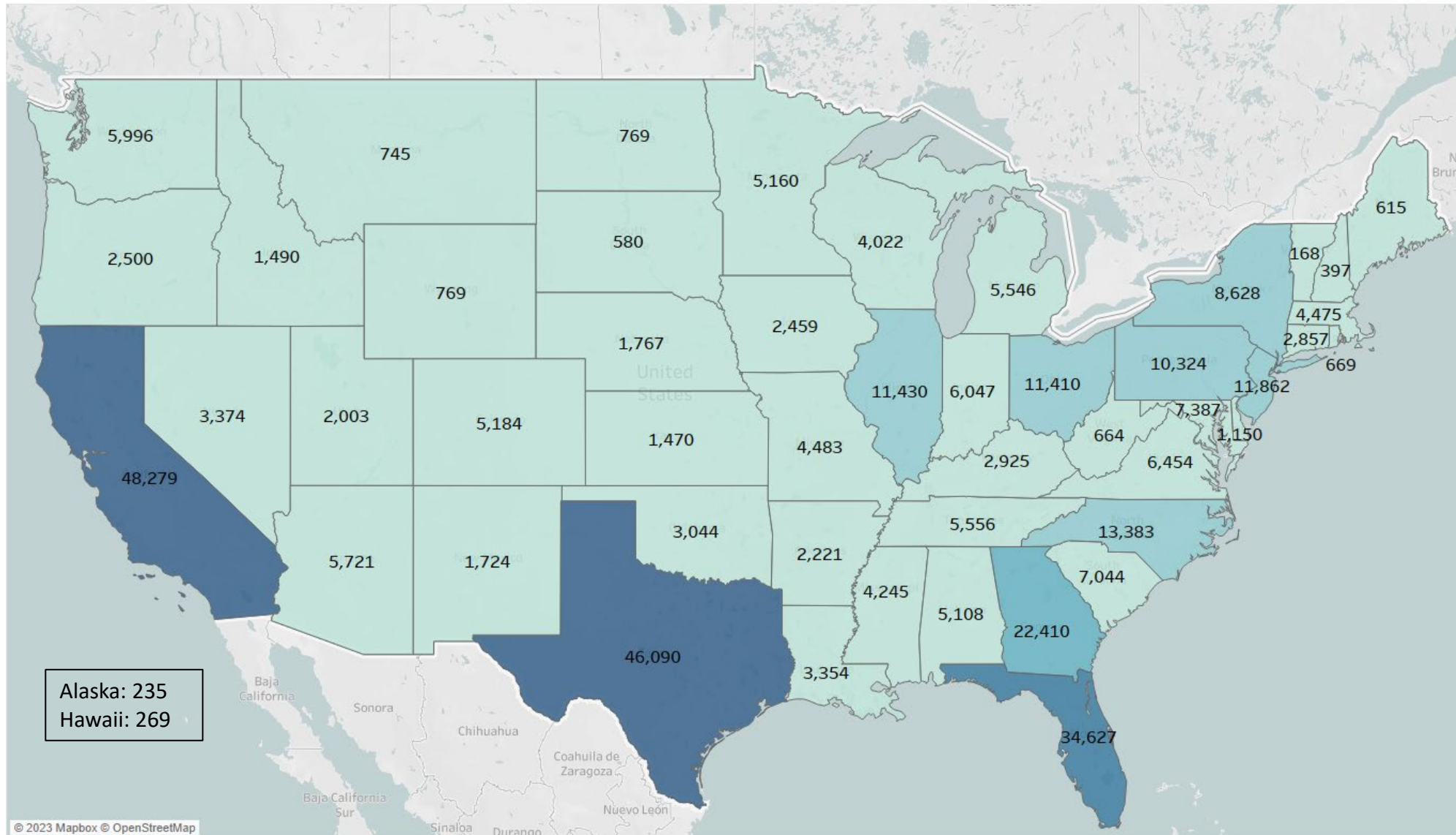
Data Source: Motor Carrier Management System (MCMIS) 02/24/2023 Data Snapshot

# Percent of New (Active) Carriers Added to MCMIS by Carrier Size Class (2019 – 2022)

Size Group	2019	2020	2021	2022
<b>1 Power Unit</b>	60.2%	65.5%	71.2%	71.7%
<b>2 - 3 Power Units</b>	23.9%	21.6%	16.4%	13.4%
<b>4 - 20 Power Units</b>	11.5%	9.1%	5.6%	4.8%
<b>21 - 55 Power Units</b>	1.1%	0.9%	0.4%	0.4%
<b>56 - 100 Power Units</b>	0.1%	0.1%	0.1%	0.1%
<b>101 - 550 Power Units</b>	0.1%	0.1%	0.0%	0.0%
<b>551 - 4,999 Power Units</b>	0.0%	0.0%	0.0%	0.0%
<b>5000+ Power Units</b>	0.0%		0.0%	0.0%
<b>No Power Units</b>	3.0%	2.9%	6.3%	9.7%

Data Source: Motor Carrier Management System (MCMIS) 02/24/2023 Data Snapshot

# Total Active For-hire Carriers (with Only 1 Power Unit) Added to MCMIS Between ( 2019 – 2022) by State



# New Carriers Added to MCMIS by Year: Percent of Total Large Truck & Bus Crashes by Year

		Crash Year			
		2018	2019	2020	2021
MCMIS Add Year	Count of New Carriers Added to MCMIS*	Percent of Total Crashes	Percent of Total Crashes	Percent of Total Crashes	Percent of Total Crashes
2018	145,362	1.3%	3.2%	3.4%	3.5%
2019	148,705		1.3%	3.2%	3.5%
2020	166,478			1.5%	4.2%
2021	247,931				2.0%

*Note: \* Counts include all carriers regardless their current status.*



# Planned Tasks for the Summer

---

- Complete an in-depth analysis of the population of new entrants (2020 – 2022) to include:
  - Operation type and operating characteristics - interstate vs. intrastate operations, for-hire vs. private
  - Types of cargo hauled
  - Possible identification of last-mile operators
  - Operating authority status
  - New-entrant program status
  - Various measures of roadside, safety-audit and crash statistics
  - Comparative analysis of the safety performance of new entrants to a comparable group of experienced carriers with similar characteristics.

# Contact Information

---

**Dan Burrill**

Statistician, Analysis Division

**[Daniel.Burrill@dot.gov](mailto:Daniel.Burrill@dot.gov)**