



U.S. Department of Transportation

Federal Motor Carrier Safety Administration

Analysis and Information (A&I) Online Registration Statistics Dashboard

**2020 Transportation Research Board 99th Annual Meeting
Federal Motor Carrier Safety Administration
Analysis, Research, and Technology Forum
January 14, 2020**

Data Visualization

- Integration and deployment of data visualization tools across FMCSA's internal and public facing data dissemination platforms
- Transform data into interactive visuals
 - ✓ Filters let users interact with data
 - ✓ Drill down to view detailed data
 - ✓ Data export and links to external tools, such as mapping
- Help users and stakeholders identify patterns in the data, supporting decision making and analysis
 - ✓ Multiple visualizations of data within a single dashboard can show different vantage points

A&I Registration Statistics

- A&I Registration Statistics provides data on registered large truck and bus companies.
- Based on registration information submitted by carriers through the MCS-150 or URS platform
- Subset of registration data can be downloaded from <https://ai.fmcsa.dot.gov/SMS/Tools/Downloads.aspx>

WELCOME TO A&I

Explore the available tools and reports to learn more about A&I's data and analysis on FMCSA safety programs and the large truck and bus industry. You can also view [this 1-minute video tour](#).

[WELCOME TO A&I](#)[FY 2018 ENFORCEMENT
PROGRAM ACTIVITY](#)[LARGE TRUCK AND BUS
CRASHES IN 2017](#)[NEW ON A&I -
REGISTRATION
STATISTICS](#)

WHAT IS A&I

Analysis & Information Online is America's source for reliable, proven data and analysis on FMCSA safety programs and large truck and bus industry compliance. The tools and reports in A&I inform data-driven safety decisions to improve FMCSA effectiveness and large truck and bus safety on our Nation's roads. Explore the resources available to learn more about industry safety trends, Agency progress, and the in-depth analysis that effects real change for safety.

What's New

26
Nov

Data Update

A&I was updated on November 26, 2018. [View Schedule.](#)

21
Nov

Registration Statistics

A&I now has registration data on large truck and bus companies. [Explore here.](#)

29
Jul

New Grants Training

Prepare to apply for and manage FMCSA safety grants [here](#)

A&I Registration Statistics Summary Page

REGISTRATION STATISTICS

A&I Registration Statistics provides data on registered large truck and bus companies to inform FMCSA's safety-based decision making. Companies register with FMCSA for a USDOT number and are responsible for updating their information on a regular basis.

View the registration data highlights below or create your own custom reports using the Registration Statistics data visualization tool in [Custom Reports](#).



Motor Carrier Management Information System (MCMIS) Snapshot Date: 10/26/2018

Data Highlights: National ⁱ

Select State:

National

 Print

Motor Carrier Classification

Registered motor carriers provide information to FMCSA on their numbers of drivers and CMVs. This data includes active motor carrier companies with USDOT numbers registered as either interstate, intrastate hazardous materials, or intrastate non-hazardous materials.



1,665,957

Carriers



7,875,317

Drivers

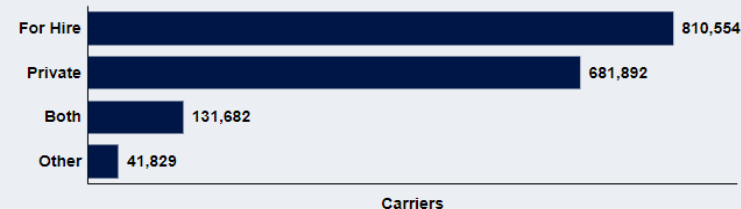


7,179,306

Vehicles

Operation Classifications

Motor carriers register their operation classification as "for hire", "private", both for-hire and private, or some other classification. For-hire carriers are paid to transport property or passengers. Private carriers transport their own goods.



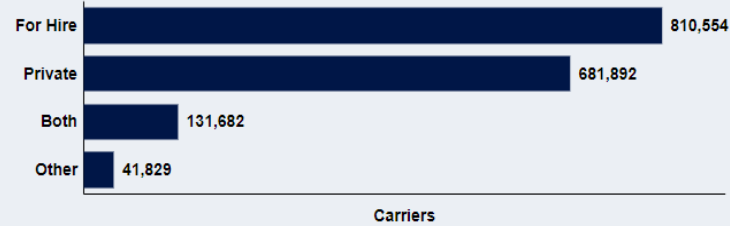
[Submit Feedback >](#)

A&I Registration Statistics Summary

Page (Contd.)

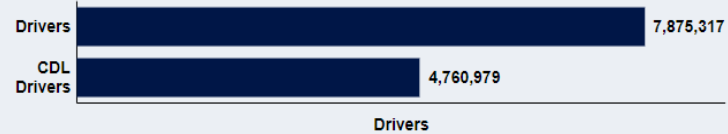
Operation Classifications

Motor carriers register their operation classification as "for hire", "private", both for-hire and private, or some other classification. For-hire carriers are paid to transport property or passengers. Private carriers transport their own goods.



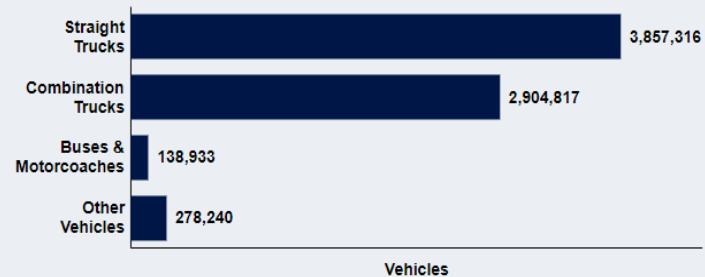
Drivers

Registered motor carriers provide information on their total number of drivers and the number holding Commercial Driver Licenses (CDLs). Drivers must have a CDL to drive certain types of CMVs, or any vehicle designed to transport 16 or more passengers or certain types of hazardous materials.

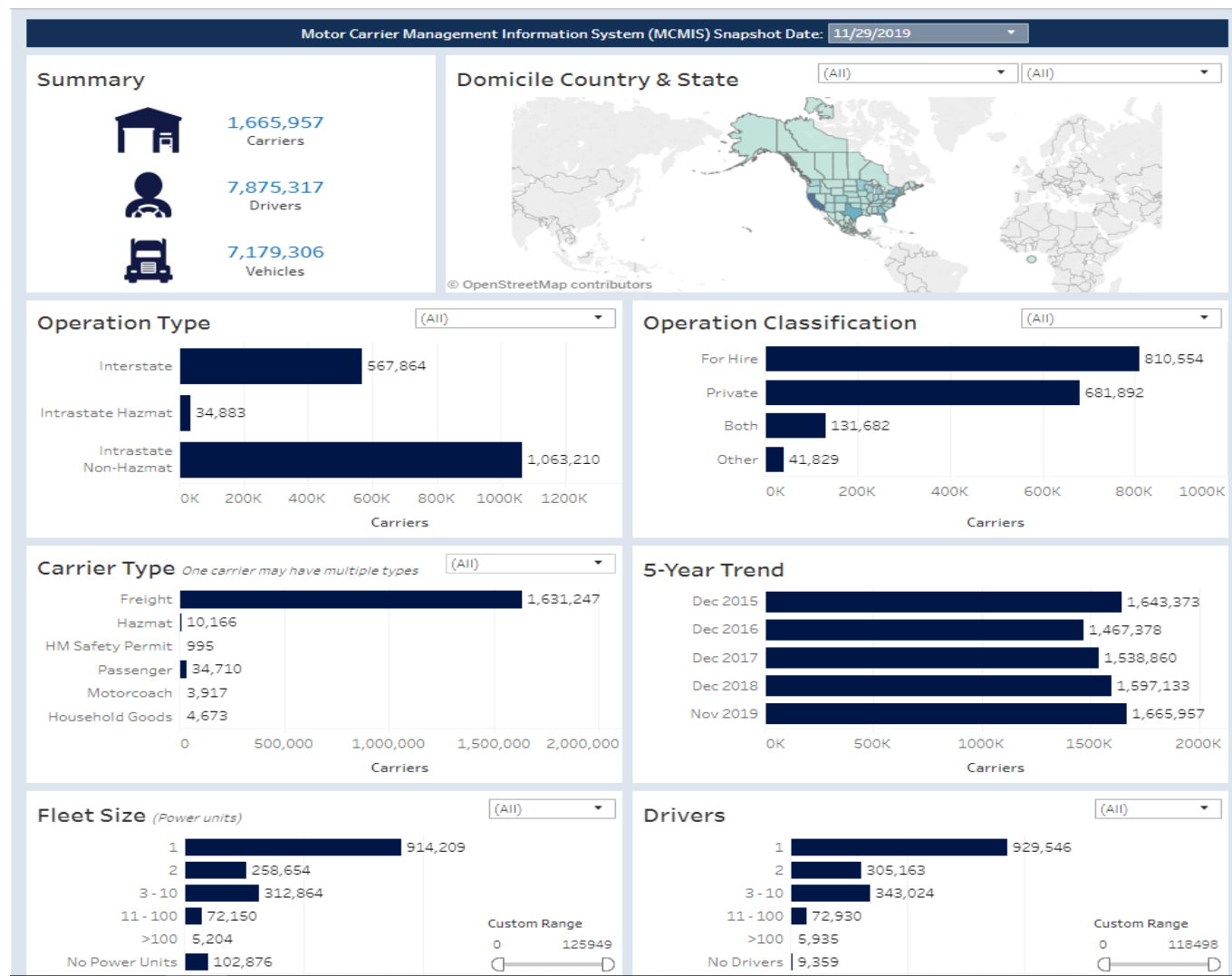


Vehicles Operated

Motor carriers operate a variety of CMVs to transport goods and passengers. Straight trucks carry cargo in a body mounted to their chassis, and combination trucks pull cargo-carrying trailers behind a tractor. Passenger-carrying vehicles include motorcoaches and buses, which are vehicles used for long-distance passenger travel. Other vehicles include other passenger vehicles, such as limousines.



Registration Statistics - Custom Reports



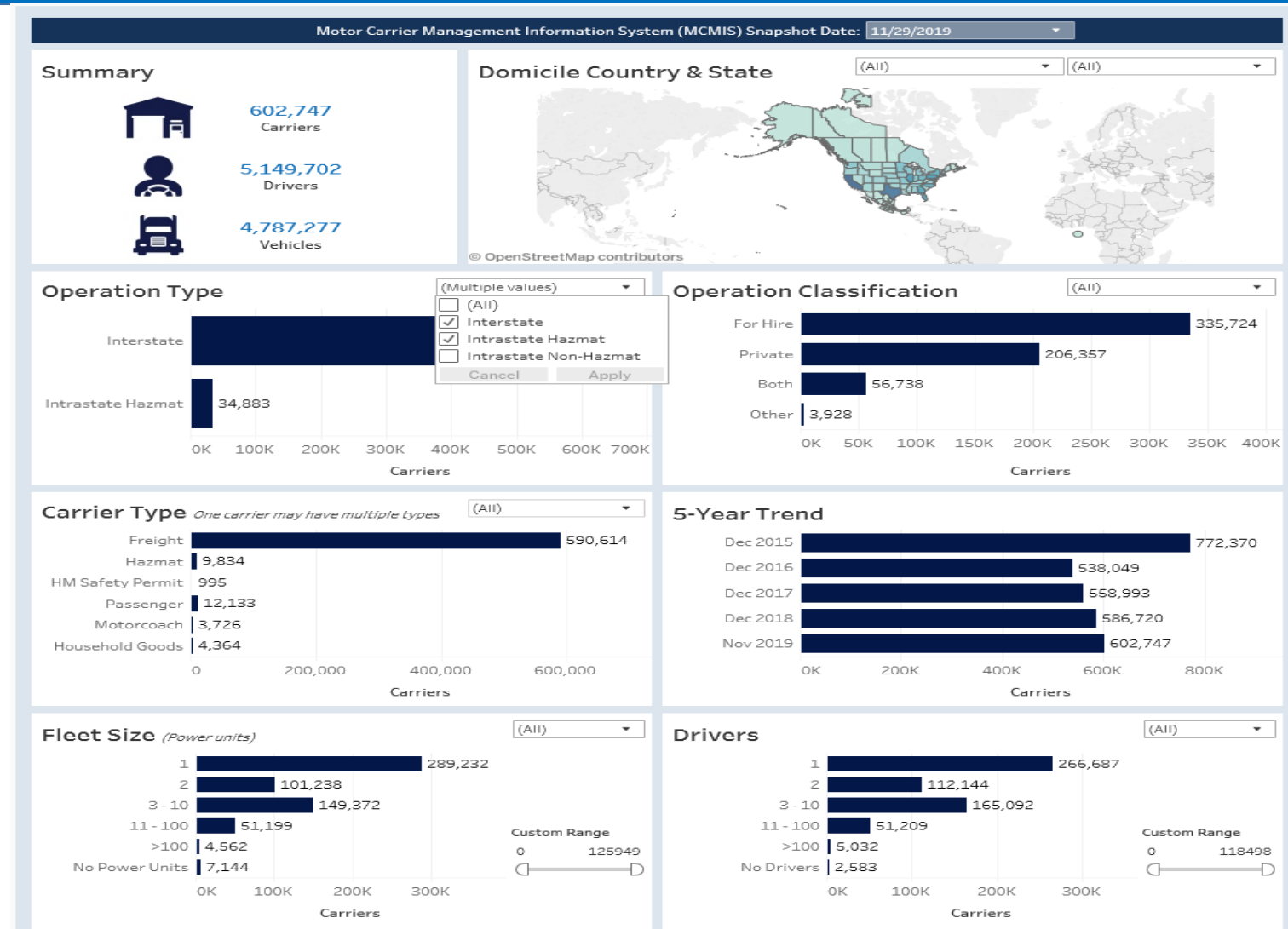
Carrier Operation Type Filter

(Multiple values)

- ☐ (All)
- ☒ Interstate
- ☒ Intrastate Hazmat
- ☐ Intrastate Non-Hazmat

Cancel

Apply



Advanced Filters

Advanced Filters

Vehicles Operated

No items checked

Cargo Classifications

No items checked

Carrier Types

No items checked

Mexican Carrier Types

No items checked

Submit



☐ Check All

☐ General Freight

☐ Household Goods

☐ Metal, Sheets, Coils, Rolls

☐ Motor Vehicles

☐ Drive Away/Towaway

☐ Logs, Poles, Beams, Lumber

☐ Building Materials

☐ Mobile Homes

☐ Machinery, Large Objects

☐ Fresh Produce

☐ Liquids/Gases

☐ Intermodal Containers

☐ Passengers

☒ Oil Field Equipment

☐ Livestock

☐ Grain, Feed, Hay

☐ Coal, Coke

☐ Meat

☐ Garbage, Refuse, Trash

☐ U.S. Mail

☐ Chemicals

☐ Commodities Dry Bulk

☐ Refrigerated Food

☐ Beverages

☐ Paper Products

Stay Connected: Contact Us Subscribe RSS Feed Facebook



U.S. DEPARTMENT OF TRANSPORTATION

Federal Motor Carrier Safety Administration

1200 NEW JERSEY AVENUE, SE
WASHINGTON, DC 20590
855-368-4200

► Contact Us
► Careers
► Email Subscription
► Forms
► Resources for Carriers
► Resources for Consignees
► Resources for Drivers
► FOIA
► Languages

Glossary

Home | DOT Intranet | TRB 99th Annual Meeting | A&I online - Motor Carrier ... | Drafts - All Documents

File Edit View Favorites Tools Help

Convert Select

axi INFORMATION ONLINE

Registration Statistics | Custom Reports | **Glossary**

GLOSSARY OF FREQUENTLY USED TERMS

Print

A | B | C | D | E | F | H | I | L | M | N | O | P | S | T | U | V

A **Authorized For-Hire Motor Carrier**
A person or company engaged in the transportation of goods or passengers for compensation. Authorized for hire carriers need to obtain operating authority (MC number) in addition to a USDOT Number.

B **Bus**
Any motor vehicle designed primarily to transport nine or more persons, including the driver.

C **CDL Driver**
A driver holding a CDL.

Commercial Driver's License (CDL)
A type of driver's license required to operate large or heavy vehicles. Requires a higher level of knowledge, experience, skills, and physical abilities than that required to drive a non-commercial vehicle. CDL holders are held to a higher standard when operating any type of vehicle on public roads.

Commercial Motor Vehicle (CMV)
A motor vehicle or combination of motor vehicles used in commerce to transport passengers or property. See 49 CFR 383.5 and 49 CFR 390.5.

D **Domicile**
Headquarters location of a motor carrier.

Driver
Any person who operates any commercial motor vehicle.

Submit Feedback >

Contact Information

Olu Ajayi
A&I Program Manager
Federal Motor Carrier Safety Administration
Analysis Division
olu.ajayi@dot.gov